

**Toter**<sup>®</sup>  
**PRO**

Built for Extremes<sup>®</sup>



**Professional Product Catalog**

# Table of Contents

## 3-Step System Solutions 2

### STEP - 1 COLLECT

Two Wheel Carts 5

Organic Carts 6

Medical Waste Carts 7

Secure Document Management Carts 8

Bear-Tough Cans 9

Cart Options 10

Slimline Containers 11

Square Containers 12

Litter Containers 13

Litter Container Accessories 14

Round Cans 16

Toter Utility Trucks 17

### STEP - 2 TRANSPORT

Cube Trucks 19

Mobile Trucks 20

Tilt Trucks 21

### STEP - 3 DISPOSE

Stationary Lifters 23

Mobile Lifters 24

Lifter Accessories 25

FR Series 26

Organics Series 27

Cart Liners **Back Cover**

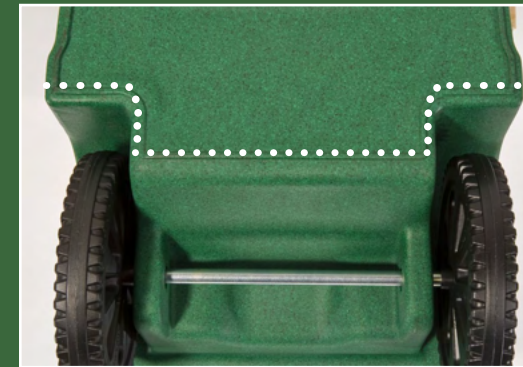


## How Advanced Rotational Molding™ Makes Toter Carts Superior

Toter employs an advanced rotational molding manufacturing process to produce a stronger cart that is built for toughness and maximum impact resistance. The process eliminates weakness and brittleness associated with injection molded plastic products.

### Advantages of Advanced Rotational Molding:

- Single-piece product design – no seams
- Consistent wall thickness for toughness and durability
- Stress-free, zero-pressure process
- Unique design and structural capabilities like Rugged Rim®, sealed stop bar journals, and granite finish
- UV stable



Toter carts features a heavy-duty wear strip to withstand dragging across rough surfaces.



Only Toter carts have a Rugged Rim® to extend the life of the cart.



Toter carts are extremely impact-resistant – they flex, but don't break.



# 3-Step System Solution

The Toter Pro product line is your All-In-One solution provider for all your waste handling needs. Our breadth of product serves multiple segments and applications, enabling your operation and tasks to be performed effectively and efficiently. Our 3 Step Process outlines the value that the Toter Pro products bring to the market.

**1. Collect**  
Load your cart



**2. Transport**  
Mechanical dump & towing



**3. Dispose**  
Automated lift



Catalog Continues...

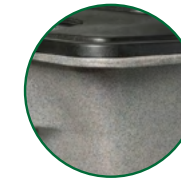


# STEP 1 - COLLECT



## TWO WHEELED CARTS

Toter two wheel carts are perfect for the collection, transportation and disposal of waste and recycling for industrial, commercial, and institutional environments.



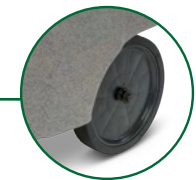
**Rugged Rim:** For added strength



**Compatible with Mechanical Lifters:**  
Helps reduce workplace injuries



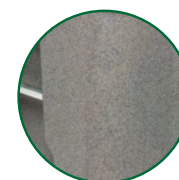
**Stress-free Advanced Rotational Molding:** For superior durability



**Quiet-cap Wheels:** Reduced noise when moving carts



MODEL#	Description	Dimensions (L x W x H)	Wheel Size	Load Rating
ANA32*	32 Gallons	24.3" x 19.8" x 37.5"	8"	112 lbs. / 50.8 kg
ANA48*	48 Gallons	28.8" x 23.5" x 37.5"	10"	168 lbs. / 76.2 kg
ANA64*	64 Gallons	31.8" x 24.3" x 41.8"	10"	224 lbs. / 101.6 kg
ANA96*	96 Gallons	35.8" x 29.8" x 43.3"	10"	335 lbs. / 152.0 kg



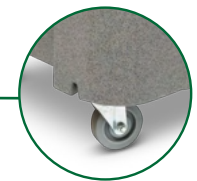
**Weight Capacity:**  
Up to 335 lbs. capacity



**Towable Carts:** Factory-installed pull-bars for caster carts only 3-carts maximum pull



**Stress-free Advanced Rotational Molding:** For superior durability



**Added Caster Wheels:**  
Helps eliminate need to tilt cart;  
Helps stabilize heavy loads

## Caster Carts

Toter caster carts are ideal for maneuvering the heaviest of loads.

MODEL#	Description	Dimensions (L x W x H)	Wheel Size	Load Rating
ACC32*	32 Gallons	24.0" x 19.8" x 40.0"	Wheel 6" / Caster 3.5"	112 lbs. / 50.8 kg
ACC64*	64 Gallons	31.8" x 24.3" x 44.4"	Wheel 10" / Caster 4"	224 lbs. / 101.6 kg
ACC96*	96 Gallons	35.8" x 29.8" x 46.0"	Wheel 10" / Caster 4"	335 lbs. / 152.0 kg

# ORGANIC CARTS

Toter two wheel and caster carts are specifically designed and leak tested to withstand the added burden of collecting heavy, wet organic waste.



MODEL#	Description	Dimensions (L x W x H)	Wheel Size	Load Rating
ONA24	24 Gallons	23.5" x 19.8" x 34.5"	10"	150 lbs. / 68.0 kg
ONG32 †	32 Gallons	24.0" x 19.8" x 37.5"	8"	200 lbs. / 90.7 kg
ONA32	32 Gallons	24.0" x 19.8" x 37.5"	8"	200 lbs. / 90.7 kg
ONA48	48 Gallons	28.8" x 23.5" x 37.5"	10"	300 lbs. / 136.0 kg
ONA64	64 Gallons	31.8" x 24.3" x 41.8"	10"	400 lbs. / 181.4 kg
ONG64 †	64 Gallons	32.0" x 24.3" x 41.8"	10"	400 lbs. / 181.4 kg
ACG32* †	32 Gallons	24.0" x 19.8" x 40.0"	Wheel 6" / Caster 3.5"	200 lbs. / 90.7 kg
ACO32	32 Gallons	24.0" x 19.8" x 40.0"	Wheel 6" / Caster 3.5v	200 lbs. / 90.7 kg
ACO64	64 Gallons	31.8" x 24.3" x 44.4"	Wheel 10" / Caster 4v	400 lbs. / 181.4 kg
ACG64* †	64 Gallons	32.0" x 24.3" x 44.3"	Wheel 10" / Caster 4v	400 lbs. / 181.4 kg

†Gasketed lid and thumb turn latch

# MEDICAL WASTE CARTS

Toter's latching medical waste carts are DOT approved and designed specifically for the healthcare industry to provide a safe, secure method for collecting, moving, and disposing of regulated medical waste.



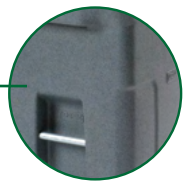
MODEL#	Description	Dimensions (L x W x H)	Wheel Size	Load Rating
RMN32	32 Gallons	24.0" x 19.8" x 37.5"	8"	112 lbs. / 50.8 kg
RMC32*	32 Gallons	24.0" x 19.8" x 40.0"	Wheel 6" / Caster 3.5"	112 lbs. / 50.8 kg
RMN64*	64 Gallons	32.0" x 24.3" x 41.8"	10"	150 lbs. / 68.0 kg
RMC64*	64 Gallons	32.0" x 24.3" x 44.3"	Wheel 10" / Caster 4"	150 lbs. / 68.0 kg
RMN96*	96 Gallons	36.0" x 29.8" x 43.3"	10"	225 lbs. / 102 kg
RMC96*	96 Gallons	36.0" x 29.8" x 46.0"	Wheel 10" / Caster 4"	225 lbs. / 102 kg

# SECURE DOCUMENT MANAGEMENT CARTS

Toter's document management carts are designed specifically for protecting some of an organization's most valuable assets – its confidential materials. Businesses must ensure that sensitive or confidential documents and private information are protected from misuse, identity theft, and loss, and Toter's document management carts are a great solution.



**Locking Lid:** Prevents unauthorized access and keep confidential documents securely contained



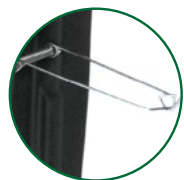
**Meets All ANSI Standards:** For lifter compatibility and safety



**Carts Can Be Hitched Together:** For easy transport



**High Load Ratings:** For safe handling of heavy loads



**Towable Carts:** Factory-installed pull-bars for caster carts only 3-carts maximum pull



**Compatible with On-site Mobile Shredding Trucks:** For ease of disposal

MODEL#	Description	Dimensions (L x W x H)	Wheel Size	Load Rating
CDA32	32 Gallons	24.0" x 19.8" x 37.5"	8"	112 lbs. / 50.8 kg
CDC32	32 Gallons	24.0" x 19.8" x 40.0"	Wheel 6" / Caster 3.5"	112 lbs. / 50.8 kg
CDA64	64 Gallons	32.0" x 24.3" x 42.0"	10"	224 lbs. / 101.6 kg
CDC64*	64 Gallons	32.0" x 24.3" x 44.5"	Wheel 10" / Caster 4"	224 lbs. / 101.6 kg
CDA96	96 Gallons	36.0" x 29.8" x 43.5"	10"	335 lbs. / 152.0 kg
CDC96*	96 Gallons	36.0" x 29.8" x 46.1"	Wheel 10" / Caster 4"	335 lbs. / 152.0 kg

# BEAR RESISTANT CARTS

Toter's Fully Automated Bear Resistant Carts are designed to minimize conflicts with bears and other predators. Our carts are constructed with our Advanced Rotational Molding™ process that creates an extremely durable trash can. We've armed them with a rugged rim to help defend against chewing, a double-walled lid, beefier handle and hinge, and minimized pry points, which makes them tough enough to withstand the strongest claws and jaws!

- Improves routing and collection efficiencies due to compatibility with both fully-automated and semiautomated applications
- Safe and robust design is easy to maneuver, yet extremely difficult for bears to compromise.
- Strength is enhanced due to structural capabilities like Rugged Rim® and sealed stop bar journals
- Ready to roll design: lids, locks, stop bars, and body are fully assembled upon delivery
- Interagency Grizzly Bear Committee's (IGBC) bear-resistant certification\*

- Features:
- 5 year warranty
  - Corrosion and chemical resistant
  - UV stable
  - RFID
  - Space for graphics



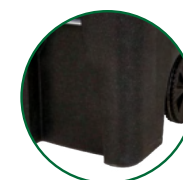
**Easy Maneuverability**



**Recessed Auto Gravity Lock**



**Rugged Rim® Design**



**Increased Radius (reduce chewing)**

MODEL#	Size	Dimensions (L x W x H)	Wheel Size	Weight
79A64*	64 Gallons	32.3" x 25.2" x 45.5"	10"	43.9 lbs.
79B96	96 Gallons	35.5" x 30.3" x 43.8"	10"	52.4 lbs.

\*64 gallon cart is IGBC certified  
IGBC Certification Number 5416

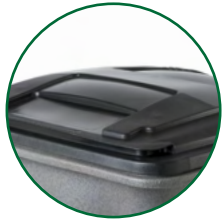


Certified by the Interagency Grizzly Bear Committee.

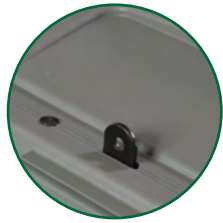


# CART OPTIONS

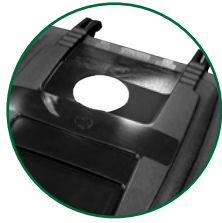
## Injection-Molded Lids



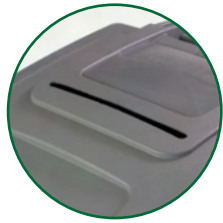
Standard Lid



Padlock Hasp Lock Lid



5" Can Cutout with or without rubber collar

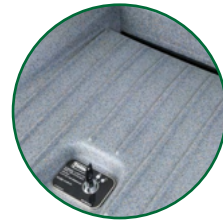


Lid with Paper Slot

## Roto-Molded Lids



Latching Medical Waste Lid



Locking Confidential Document Lid



Latching Organics Lid

## Custom Options

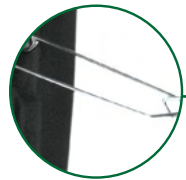
- Pantone Color Matching
- Post-mold graphics
- In-mold labels (IML) on lids
- Hot stamps
- Towable carts



In-mold Labels (IML) on Lids



Post-mold Graphics



**Towable Carts**  
Factory-installed pull-bars for caster carts only 3-carts maximum pull



# SLIMLINE CONTAINERS

No matter which configuration you choose, Toter Slimline Containers is the perfect solution for your food service, institutional, and office building needs. Made by a roto-molding process that eliminates weak spots, our containers are built for extreme situations and extended service, indoors or outdoors. Available in two sizes with five lid choices, and loaded with useful features like thicker drag strips, three robust handles, rugged rims and venting channels, Toter Slimline Containers provide the ideal solution for your collection needs.



## Toter Slimline

- Integrated bag cinch
- Durable construction to withstand everyday use
- Broad range of colors and customization
- Bottom wear strip for dragging
- Various lid designs to fit your needs

MODEL#	Description
SL016-00000	16G Slimline
SL023-00000	23G Slimline

## Lid Options

MODEL#	Description
SL000-10000	Slimline - Swing Lid
SL000-20000	Slimline - Bottle/Can Lid
SL000-30000	Slimline - Mixed Recycling Lid
SL000-40000	Slimline - Paper Lid
SL000-50000	Slimline - Hinged Lid
SL000-60000	Slimline - Open Top Lid



# SQUARE CONTAINERS

The versatile Toter Square Container is ideal in meeting the disposal needs of a variety of environments, including event spaces, outdoor venues, retail locations, and food service establishments. Available in 3 sizes and 3 lid options, the durable Toter Square Container is an industry choice.



**25 Gallon**  
Square Container

**35 Gallon**  
Square Container

**50 Gallon**  
Square Container

PART#	Description	Size	Dimension (L x W x H)
SSC25*	Square Container	25 Gallons	18.1" x 18.1" x 30.1"
SSC35*	Square Container	35 Gallons	20.8" x 20.8" x 30.0"
SSC50*	Square Container	50 Gallons	23.1" x 23.1" x 33.6"

## Lid Options



Dome Top with Swing Door

Part	Dimensions (L x W x H)
STL35*	22.3" x 20.8" x 11.0"
STL50*	24.4" x 23.1" x 11.1"



Swing Door

Part	Dimensions (L x W x H)
SSD25*	18.1" x 18.1" x 5.0"
SSD35	21.0" x 21.0" x 5.8"
SSD50	23.1" x 23.1" x 5.6"



Open Top

Part	Dimensions (L x W x H)
SOL25	18.1" x 18.1" x 5.0"
SOL35	21.0" x 21.0" x 5.8"



# LITTER CONTAINERS

Toter's litter containers are designed for industrial, commercial, recreational, and institutional environments. Constructed using Advanced Rotational Molding™ for maximum durability and impact resistance, Toter litter containers are extremely rugged and built to last.



**45 & 60 Gallon models:**  
Hinged lid for ease in emptying

**Textured granite surface:**  
Provides an attractive, durable finish

**Hollow base:** Holds up to 75 lbs. of sand for stability

**60-Gallon model:** Includes 4 easily accessible openings

**Custom Graphics Available**

**Advanced Rotational Molding™:** For Maximum Durability, and Impact Resistance

## Litter Containers

MODEL#	Description	Size	Dimensions (L x W x H)	Load Rating
860-A†	Dome Top Litter Container with Automatic Gravity Release Latch for Automated Collection	60 Gallons	28.3" x 28.3" x 48.8"	200 lbs. / 90.7 kg
860-B†	Dome Top Litter Container w/ Bag Holder Straps for Manual or Automated Collection (w/o Gravity Latch)	60 Gallons	28.3" x 28.3" x 48.8"	200 lbs. / 90.7 kg
840-K*	Dome Top Litter Container for Manual Collection	45 Gallons	27.3" x 27.3" x 46.5"	150 lbs. / 68.0 kg

†A-model (860-A) can be emptied by automated truck. Ideal for bus stops and parks.



# LITTER CONTAINER ACCESSORIES



Rigid Liner



Can/Bottle Recycling Door Inserts  
(Inserts sold in packs of four)



Custom graphics available  
for additional charge.



## Litter Container Accessories

MODEL#	Description	Dimensions (L x W x H)
RL060-00BLK*	Rigid Liner for 60 Gallon Litter Container	22.8" x 23.0" x 31.0"
RL045-00BLK*	Rigid Liner for 45 Gallon Litter Container	21.8" x 22.0" x 27.0"
5660-50-0030	Can/Bottle Recycling Door Inserts for 60 Gallon Litter Container (sold in packs of four)	
5660-50-0031	Can/Bottle Recycling Door Inserts for 45 Gallon Litter Container (sold in packs of two)	



# ROUND CANS

The Toter Round Can was designed to withstand heavy and continuous use both indoors and out. Our Advanced Rotational Molding™ manufacturing process eliminates built in stress, weakness, and brittleness that's associated with plastic injection containers, lending itself to a more durable trash can that is engineered for toughness and high impact resistance.

The Toter Round Can is the perfect solution for industrial, construction, food service, healthcare, janitorial, and institutional environments.



## Round Cans

MODEL#	Description	Width (Including handles)	Height	Diameter
RND20	20 gal. Round Container	23.4"	23.2"	19.4"
RND32	32 gal. Round Container	26.5"	27.9"	22.0"
RND44	44 gal. Round Container	28.6"	31.4"	24.0"
RND55	55 gal. Round Container	31.3"	31.4"	26.3"

## Accessories



MODEL#	Description
RND20-L	20 gal. Round Lid
RND32-L	32 gal. Round Lid
RND44-L	44 gal. Round Lid
RND55-L	55 gal. Round Lid



MODEL#	Description
DAK10-0000	Dolly Adapter
WDL10-00BLK	Dolly Kit

# TOTER UTILITY CARTS

The durable, ergonomically designed utility cart by Toter will help contribute to worker safety and increase their efficiency. Available in a variety of configurations and sizes, these Heavy Duty Utility Carts help meet your day to day needs.



## Heavy Duty Lipped-Shelf Carts

MODEL#	Style	Tray	Handle	Dimensions (L x W x H)	US Capacity
UCL00-S0002	Large	Lipped	Straight	40.7 x 25.6 x 33.5	550 pounds
UCL00-S0001	Small	Lipped	Straight	34.4 x 16.7 x 32.5	550 pounds
UCL00-E0002	Large	Lipped	Ergo	43.7 x 25.6 x 33.5	550 pounds
UCL00-E0001	Small	Lipped	Ergo	37.7 x 17.1 x 33.5	550 pounds



## Material Handling

Toter's cube trucks are great for collecting and transporting waste. Rugged Rim® technology and durable rotational molded construction means they're built to last. Recessed gripping areas make them easy to maneuver the heaviest loads.

- Load ratings up to 800 lbs.
- Equipped with standard forklift pockets (AMC only)
- Powder-coated frames reduce corrosion, prevent flaking and ensure long service life
- Removable split lids available
- Compatible with Universal Lifters (AMC only)



### Cube Trucks

MODEL#	Description	Size	Dimensions (L x W x H)	Load Rating
MMC08	Heavy-Duty Manual Cube Truck (Manual Unloading)	8 Cubic Feet	36.3" x 25.5" x 28.0"	300 lbs./ 136.1 kg
MMC12*	Heavy-Duty Manual Cube Truck (Manual Unloading)	12 Cubic Feet	40.8" x 27.5" x 32.5"	400 lbs./ 181.4 kg
MMC16*	Heavy-Duty Manual Cube Truck (Manual Unloading)	16 Cubic Feet	44.0" x 30.4" x 35.5"	500 lbs./ 226.8 kg
MMC20*	Heavy-Duty Manual Cube Truck (Manual Unloading)	20 Cubic Feet	49.3" x 32.5" x 36.5"	600 lbs./ 272.2 kg
AMC20*	Heavy-Duty Cube Truck With Forklift Pockets (Automated or Manual Unloading)	20 Cubic Feet	49.3" x 32.5" x 38.8"	800 lbs./ 362.9 kg

### Lid Options

MODEL#	Description	Dimensions (L x W x H)
LMC08	Removable Split Lid Fits All 8 Cubic Feet Cube Trucks	37.3" x 27.0" x 6.5"
LMC12	Removable Split Lid Fits All 12 Cubic Feet Cube Trucks	41.8" x 28.8" x 6.5"

# MOBILE TRUCKS

Toter heavy-duty mobile trucks are perfect for moving large, heavy waste. Constructed with durable plastic, they're lighter than steel models. Powder-coated frames reduce corrosion and flaking to help ensure long service life.



FLM20



FLA20

MODEL#	Description	Capacity/Volume	Dimensions (L x W x H)	Wheels/Casters	Load Rating
AM120	Universal Mobile Truck	2 Cubic Yard	68.0" x 54.0" x 51.8"	5", 1 Directional Lock, 3 Swivel; Corner Placement	2,300 lbs. / 1,043.3 kg
AMT20	Towable Universal Mobile Truck	2 Cubic Yard	69.3" x 54.0" x 52.8"	6", 2 Directional Lock, 2 Swivel; Corner Placement	2,300 lbs. / 1,043.3 kg
AMA20	Rapid Speed Mobile Truck (Towable up to 25 mph)	2 Cubic Yard	68.3" x 54.0" x 62.8"	4.75" x 16" Pneumatic Wheels	1,500 lbs. / 680.4 kg
FLM20	Mobile Truck with Attached Lid	2 Cubic Yard	75.5" x 44.3" x 51.5"	5", 1 Directional Lock, 3 Swivel; Corner Placement	1,000 lbs. / 453.6 kg
FLT20	Mobile Truck with Attached Lid and Pintle Hook Tow Assembly	2 Cubic Yard	78.3" x 44.3" x 52.5"	6", 2 Directional Lock, 2 Swivel; Corner Placement	1,000 lbs. / 453.6 kg
FLA20	Rapid Speed Mobile Truck with Attached Lid (Towable up to 25 mph)	2 Cubic Yard	76.3" x 44.3" x 63.3"	4.75" x 16" Pneumatic Wheels	1,000 lbs. / 453.6 kg
FLA30	Rapid Speed Mobile Truck with Attached Lid (Towable up to 25 mph)	3 Cubic Yard	75.8" x 50.5" x 76.0"	4.75" x 16" Pneumatic Wheels	1,500 lbs. / 680.4 kg

## Lids

MODEL#	Description	Dimensions (L x W x H)
LM110	Removable Solid Lid, fits 1 Cu. Yd. Universal Mobile or Towable Mobile Trucks	59.5" x 34.5" x 6.0"
LMS10	Removable Split Lid hinges in center, fits 1 Cu. Yd. Universal Mobile or Towable Mobile Trucks	59.5" x 34.5" x 6.3"

# TILT TRUCKS

Made with Toter's Advanced Rotational Molding, this Tilt Truck is built to outlast and outperform. Lighten the load when moving general, industrial and food waste, and utilize the unique integrated handles for easier maneuvering and dumping. Toter® Tilt Trucks can safely transport loads from 400 - 2,000lbs, and with optional tow bars



## Nestable Tilt Trucks

MODEL#	Description	Capacity/Volume	Dimensions (L x W x H)	Wheel Size	Load Rating
NT005	Utility Duty	1/2 Cubic Yard	58.63" x 32.0" x 36.0"	10" x 1-3/4"	400 lbs. / 181.4 kg
NT105	Standard Duty	1/2 Cubic Yard	58.63" x 32.0" x 37.0"	12" x 2"	825 lbs. / 374.2 kg
NT205	Heavy Duty	1/2 Cubic Yard	58.63" x 32.0" x 37.0"	12" x 3"	1,200 lbs. / 544.3 kg
NT175	Standard Duty	3/4 Cubic Yard	66.63" x 29.88" x 41.38"	12" x 2"	875 lbs. / 396.9 kg
NT010	Utility Duty	1 Cubic Yard	75.0" x 32.5" x 44.25"	12" x 2"	825 lbs. / 374.2 kg
NT110	Standard Duty	1 Cubic Yard	75.0" x 32.5" x 44.25"	12" x 3"	1,200 lbs. / 544.3 kg
NT210	Heavy Duty	1 Cubic Yard	75.0" x 32.5" x 44.25"	12" x 3"	2,000 lbs. / 907.2 kg
NTT05	Towable	1/2 Cubic Yard	58.58" x 32.0" x 37"	12" x 3"	1,200 lbs. / 544.3 kg
NTT10	Towable	1 Cubic Yard	75" x 32.0" x 44.14"	12" x 3"	2,000 lbs. / 907.2 kg
NTT75	Towable	3/4 Cubic Yard	66.58" x 29.78" x 41.38"	12" x 3"	1,450 lbs. / 635 kg



NT210  
Heavy Duty



NT105  
Standard Duty



NT005  
Utility Duty



## Automated Lifters

# STATIONARY



### STATIONARY LIFTERS

- Powered by a 115/230 volt, single-phase, 2hp motor
- Up to 70" dump height
- 350 lb. load rating / 800 lb. ship weight
- Painted safety yellow
- Maximum dump height of 45 1/2" to 70"

*\* Works with two wheel carts & caster carts*

**Single phase:** 3069-ST-2001  
**Three phase:** 3069-ST-2003



### UNIVERSAL STATIONARY LIFTERS

- Compatible with mobile trucks, tilt trucks and carts
- Mounts to concrete or metal pad
- Powered by a 208/230/460 volt, three-phase, 5hp motor
- 2,500 lb. load rating / 1,400 lb. ship weight
- Painted safety yellow

*Works with tilt trucks, two wheel carts and caster carts only*

**Part # 3078-XX-6000**      **Low Profile Universal Lifter Part # 3078-LP-5000**  
 XX = Dump height in increments of 5" from 50" to 70"



### SADDLE STATIONARY LIFTERS

- 68" to 84" maximum dump height
- Empties into various containers, compactors and other collection systems
- Mounts to concrete or metal pad
- Powered by a 115/230 volt, single-phase, 1hp motor
- 350 lb. load rating / 400 lb. ship weight
- Painted safety yellow

*Works with two wheel carts & caster carts only*

**Part #3081-ST-5000**



### CANDY CANE STATIONARY LIFTERS

- 72" to 120" dump height
- Ideal for applications requiring a high dump angle into deep collection units
- Designed for bulk amounts of waste and materials
- Power unit supplied
- Powered by a 208/203/460 volt, three-phase, 2hp motor
- 350 lb. load rating / 2000 lb. ship weight
- Painted safety yellow

*Works with tilt trucks, two wheel carts and caster carts*

**Part #3064-ST-2000**

W  
R  
O  
M



## ROVER MOBILE LIFTERS

- Fast, efficient, station-to-station collection
- Improves workplace efficiency and reduces chance of injuries
- Auto safety pads lock in place when unit is in use
- Stores easily when not in use
- 12 volt battery charger included
- 350 lb. load rating / 800 lb. ship weight
- Painted safety yellow

*Works with two wheel carts & caster carts*

**Part # 3063-MT-4124**

49 1/2"- 54" max dump height  
Non-Towable

**Part # 3063-MT-4024**

49 1/2"- 54" max dump height  
Non-Towable



## ROUND CAN MOBILE LIFTERS

- Maximum dump height of 68" to 84"
- Designed to empty Toter Round Can 32 and 44 gallon containers
- Fits competitors side lift handle barrel containers
- Easily fits through 32" door opening
- 350 lb. load rating / 675 lb. ship weight
- Painted safety yellow

*Works with two wheel carts & caster carts only*

**Part # 3081-MT-1000**

## LIFTERS ACCESSORIES



### Alarm with Flashing Light

Compatible with Atlas Mobile, Rover Mobile and Saddle Mobile lifters

**Part # 3063-MT-6024**



### Floor Stop Bracket

Compatible with Atlas Mobile, Rover Mobile and Saddle Mobile lifters

**Part # 3063-MT-6022**

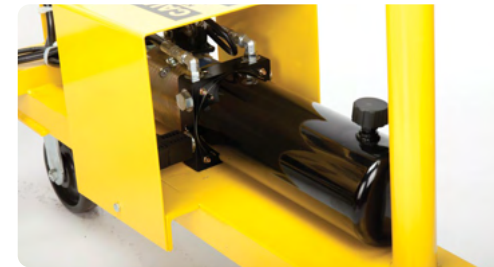


### Battery Percent Meter

Compatible with Atlas Mobile, Rover Mobile and Saddle Mobile lifters

**Part # 3063-MT-6022**

## POWER UNITS & CONTROLS



Power Unit



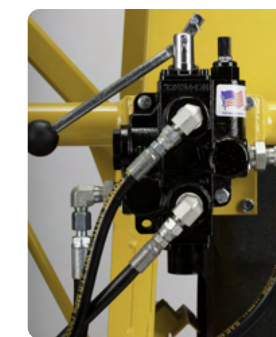
Batteries and battery box



Operator Controls



Control Panel

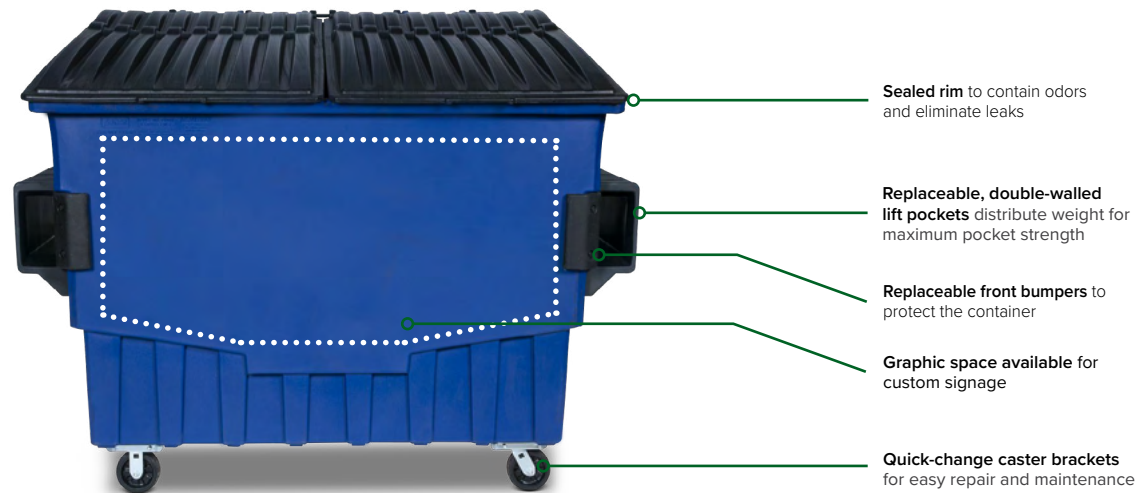


Manual Valve Controls

# FR SERIES

Toter's FR series container features steel rod reinforcement and ribbed bottom wear chimes for enhanced durability, and contain replaceable lift pockets to help increase uptime and decrease labor costs.

- Steel rod reinforcement and ribbed bottom wear chimes for enhanced durability
- Double-walled lift pockets to distribute weight for maximum pocket strength
- Integrated bumpers to protect the container for long life
- Graphic space available for custom signage



MODEL#	Description	Dimensions	Load Rating	Weight	Unassembled		Assembled	
					Containers Per stack	53' t/l Quantity	Containers Per stack	53' t/l Quantity
FR010	1-cubic-yard FEL*	82.3" x 38.0" x 41.8"	750 lbs. / 340.91 kg	192 lbs.	6	96	4	60
FR020	2-cubic-yard FEL*	82.3" x 43.1" x 52.8"	1,000 lbs. / 454.55 kg	231 lbs.	5	80	3	45
FR030	3-cubic-yard FEL	82.3" x 51.1" x 61.9"	1,500 lbs. / 681.8 kg	280 lbs.	4	64	2	24
FR040	4-cubic-yard FEL*	82.3" x 60.5" x 67.4"	2,000 lbs. / 909.1 kg	315 lbs.	3	30	2	20

\*Dimensions include casters.

MODEL#	Post-Mold Graphic	Drain Plug	Lock Bar (Manual or Automatic)	No Casters	6" Standard Casters (2 Swivel, 2 Rigid)	6" Standard Casters (All Swivel)	6" HD Casters (2 Swivel, 2 Rigid or All Swivel)	8" Standard Casters (All Swivel)	Caster Mounting Pads Only	Bumpers
FR010	●	●	●	●	S	●	●	●	●	S
FR020	●	●	●	●	S	●	●	●	●	S
FR030	●	●	●	●	S	●	●	●	●	S
FR040	●	●	●	S	●	●	●	●	●	S

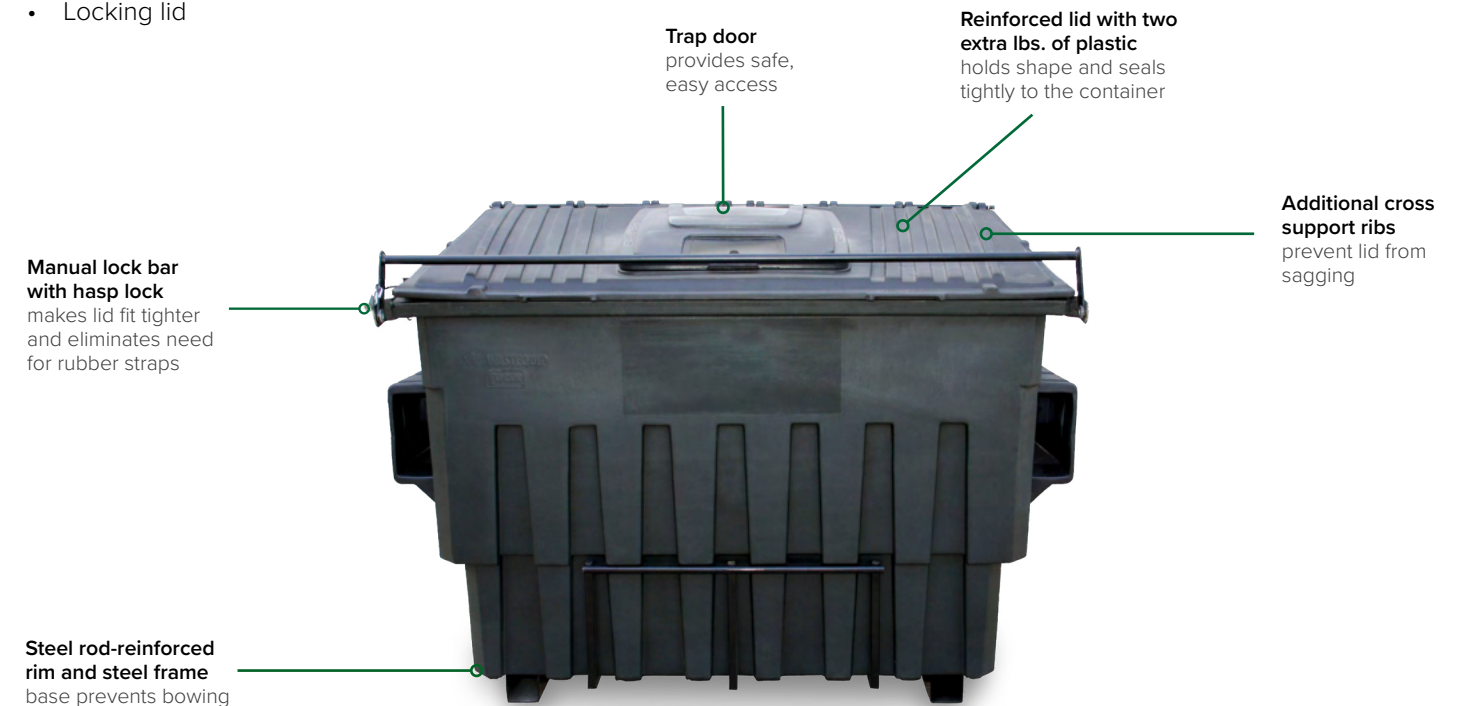
S = standard ● = optional



# ORGANICS SERIES

Stronger and more rugged than standard plastic front load containers, Toter's Organics FEL Containers feature a steel-rod-reinforced rim and base to prevent bowing under the weight of heavy, wet, organic waste while maintaining the integrity of the container. The plastic material also helps withstand continued exposure to aggressive organic waste without rusting or corroding.

- Specifically designed for heavy, wet organic waste
- Built-in drain plug for easy clean-out
- Withstands exposure to organic waste without rusting
- Leak-proof
- Locking lid



MODEL#	Post-Mold Graphic	Drain Plug	Lock Bar (Manual or Automatic)	No Casters	XHD Body With Steel Frame and Steel Runners	XHD Body With Steel Frame, 6" HD Casters, All Swivel, 2 Braking	XHD Body With Steel Frame, 6" HD Casters, 2 Swivel Braking, 2 Rigid	Plastic Lift Pockets	Steel Lift Pockets	Organic Single Lid With Trap Door
FL52C	●	●	●	—	—	S	●	S	—	—
FL53A	●	●	●	S	S	—	—	S	—	●
FL53C	●	●	●	—	—	S	—	S	—	●

S = standard ● = optional

Unless otherwise stated, pictures, materials and container sizes indicated in this catalog (and related materials) are nominal sizes and representations. Actual volume, products and materials are subject to manufacturing and commercial variations and Toter's practices, and may vary from nominal sizes and materials. Please visit [www.toter.com](http://www.toter.com) for our Terms and Conditions of Sale.

# TRASH CAN LINERS

Shield your trash can from sticky messes with Toter Cart Liners, the first full-size bags made to fit all two-wheel garbage cans. Toter cart liners are designed to protect your can with built-in odor eliminators to combat smell. Simply place a new liner in your garbage can each week after they slip out easily into the garbage truck on trash day. The liners are available in 48, 64, and 96 gallon sizes.

- Available in 48, 64, and 96 gallon sizes
- Covers the inside of your cart to protect against sticky messes
- Contains a built-in odor eliminator
- Easily slips out and falls right into garbage truck on pick-up days
- Durable 75% recycled plastic material
- Designed to fit all garbage cans
- Manufactured in the USA
- Sold in packs of 10; Sold in cases of 8



**Cart Liners**

Part	Capacity	Fits	MIL	Qty. Per Case	Box Dimensions (L x W x H)	Bag Dimension (L x W x H)
*GB048-R8000	48 gallons	Up to 48 Gallons	2.0 mil	80	4.3" x 4.3" x 10.5"	35.0" x 10.0" x 54.0"
*GB064-R8000	64 gallons	Up to 64 Gallons	1.1 mil	80	3.5" x 3.5" x 11.0"	40.0" x 10.0" x 53.0"
*GB096-R8000	96 gallons	Up to 96 Gallons	1.1 mil	80	4.0" x 4.0" x 10.8"	39.0" x 18.0" x 65.0"

# Toter<sup>®</sup> PRO

**Built for Extremes<sup>®</sup>**

PO Box 5338  
841 Meacham Road  
Statesville, NC 28677  
844-556-6677  
ProProducts@Toter.com  
www.toter.com